



Pegasus CIS Subcontractors



Overview

Pegasus CIS Subcontractors focuses on controlling all aspects of subcontractor administration, enabling any company that operates under the HM Revenue & Customs Construction Industry Scheme to efficiently manage payments, tax and retention while covering all of the legislative requirements.

Pegasus CIS Subcontractors is an ideal solution for contractors who use subcontract labour on their Jobs and need to efficiently handle HM Revenue & Customs (HMRC) legislation that governs the use of these subcontractors. Pegasus CIS Subcontractors controls all aspects of subcontractor administration from subcontractor verification, invoice / timesheet / application entry and payment, through to generation of the figures required on monthly returns to HMRC & submission of these via the online services.

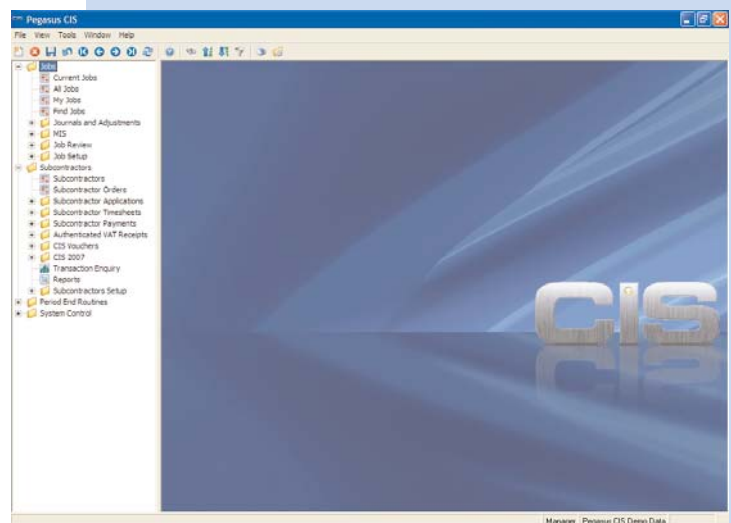
Using Pegasus CIS Subcontractors not only offers control over payments and handles the tax requirements of the Construction Industry Scheme, but also calculates and submits these on the monthly returns to HMRC, ensuring returns are accurate and made on time. The time saving, accuracy and online submissions are key to any company that operates under the HMRC Construction Industry Scheme.

Pegasus CIS Subcontractors not only manages all aspects of using subcontractors, but also integrates into the Contract Costing system to provide powerful and comprehensive reporting of these subcontractor costs against jobs and customers.

Pegasus CIS Subcontractors fully integrates with Opera II, Sage Line 50 and Sage MMS and links with the Nominal Ledger, Cashbook and Customers.

What's the difference between Pegasus CIS Subcontractors and the full Pegasus CIS Enterprise solution?

While Pegasus CIS Subcontractors manages the subcontractor element of contracts, Pegasus CIS Enterprise is a fully integrated Contract Costing system that manages all of the financial aspects of running a contract. In addition to the features offered by Pegasus CIS Subcontractors, Pegasus CIS Enterprise also allows the entry of costs from suppliers, direct labour, stock and other areas such as petty cash, together with sales revenue from both Invoices and Applications/ Certifications.



Subcontractors

The functionality in the Pegasus CIS Subcontractors module is identical in every way to the module included in the full Pegasus CIS Enterprise solution. It provides comprehensive facilities to automate the administration of subcontractor orders, invoices, timesheets, applications, certification and payments. Management information can be produced that details a complete analysis of monies owed, committed costs, retentions and discount taken, by Subcontractor and Job.

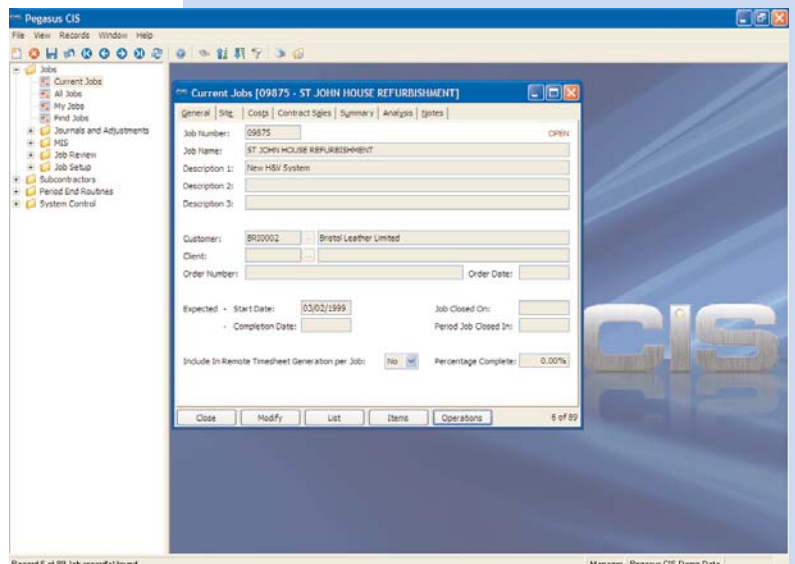
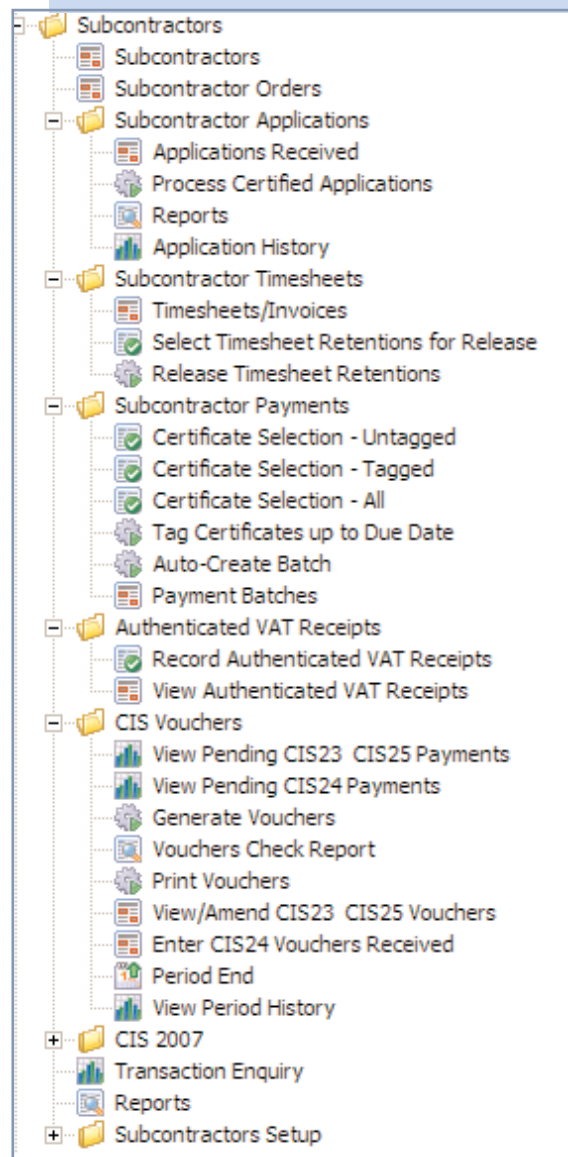
If using the Subcontractor Applications process then it is possible to record the current Application values, while having the ability to look at the cumulative Applications received on a per Job basis. In real life, contractors will typically use their main subcontractors on more than one job, each with different labour and material splits. For this reason, the Pegasus CIS Subcontractors solution also provides a comprehensive Contract Costing system.

Jobs

The inclusion of the Job Costing system in the Pegasus CIS Subcontractors solution acts as a contract management system for those contractors who subcontract most of their work.

Administration

The Administration system provides all the processes and commands required to operate Pegasus CIS Subcontractors as either a stand alone or as a fully integrated Subcontractors system.



Comparison

	Pegasus CIS Subcontractors	Pegasus CIS Enterprise
Jobs	Yes	Yes
Contract Sales	No	Yes
Purchasing	No	Yes
Stock Control	No	Yes
Labour	No	Yes
Subcontractors	Yes	Yes
Back Office Integration		
Opera II	Yes	Yes
Sage Line 50	Yes	Yes
Sage MMS	Yes	Yes
Level of Back Office Integration	Customer Accounts, Nominal Ledger and Cashbook	Sales, Purchase, Nominal, Cashbook and Payroll
Database	Access/MS SQL Server	Access/MS SQL Server